

# OCEANBOTICS™ SRV-8

*Setting a new standard for  
moving and working underwater*



## SRV-8

The groundbreaking **OCEANBOTICS SRV-8\*** is one of the best things that has happened to the underwater industry in years. Not only is it extremely agile and maneuverable, it's easy and fun to operate!

With 8 thrusters and advanced programming, the **SUBSEA ROBOTIC VEHICLE** is intuitive, user customizable, and moves almost instantaneously in *any* direction...even sideways (crabbing). The small diameter tether ensures low drag, allowing the vehicle to operate in strong currents.

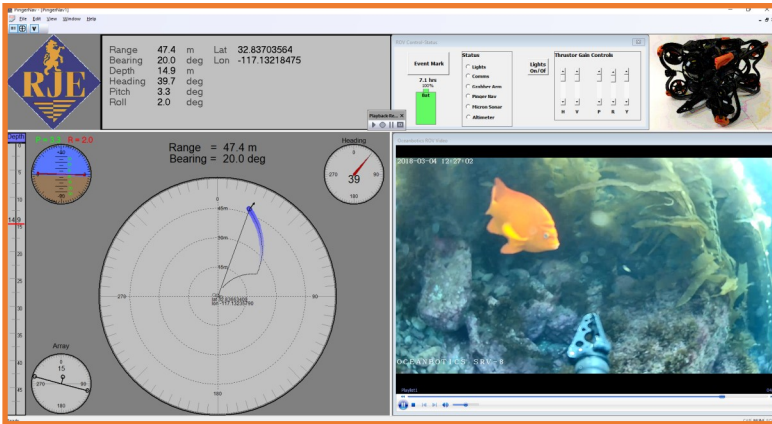
It uses a standard joystick controller which is connected to a sunlight readable monitor for easy viewing. The Navigation / Control Software provides significant benefits for the system.

**BEST VALUE IN ROVs**  
**AMAZINGLY MANEUVERABLE & AGILE**  
**SUPERIOR CONTROL**  
**QUICK, RESPONSIVE, EASY TO FLY**  
**WILL HELP YOU GET YOUR JOB  
DONE...FASTER**  
**QUICK SET UP AND START UP**

## FEATURES

- ◆ 8 Thrusters
- ◆ Analog/HD Digital Camera (Analog for navigation / HD for recording)
- ◆ Navigation
- ◆ Robust—designed to last, easy to maintain
- ◆ Long Battery Life
- ◆ 300m Depth Rating
- ◆ Hot-Swappable Battery Modules
- ◆ Integrates with 3rd Party Products
- ◆ Builds on 25 years of innovation & quality by parent company RJE International Inc





**Navigation / Control Screen**



**Easy and fun to operate**



**8 Thrusters, Dual-Mode Camera, 130° Beam Angle Lights, 3,000 Lumens Each**



**Joystick Controller, Sunlight Readable Monitor, Tether & Spool**

**Vehicle**

- Thrusters 8 Brushless DC Thrusters
- Maneuverability In any direction - 6 Degrees of Freedom
- Speed 4 Knots in Any Direction
- Camera Dual-Mode Low Light Analog/HD  
Analog for Navigation (very low latency)  
HD for Recording
- Lights 2 Standard  
130° Beam Angle, 3,000 Lumens Each  
Optional Lights for Additional Lighting
- Navigation Electronic Compass  
Attitude, Roll Pitch & Yaw  
Optional:  
Distance from Operator to ROV  
Bearing from Operator to ROV  
Long/Lat Mapping with Waypoints
- Sensors Depth Sensor (Meters or Feet)  
Temperature (°C or °F)  
Tether Counter (Meters or Feet)
- External Sensor Inputs Accommodates 4 external devices via RS232, RS485 and Ethernet
- Battery Life 6+ Hours Average Use
- Battery Source Dual Hot-Swappable Battery Modules
- Depth Rating 300 Meters (984ft)
- Weight 32lbs (14.5kg)
- Dimensions Length: 50cm (19.5")  
Height: 33cm (13.0")  
Width: 43cm (17.0")

**Topside**

- Tether 75m (246ft) @ 4.5mm Diameter on Reel  
Optional 100m (328ft), 150m (492ft) & Custom
- Reel 150m Capacity with Slip Ring
- Controller Joystick with Sunlight Readable  
8.4" Color Monitor  
Notebook Computer Optional

\*PATENT PENDING

SPECIFICATIONS SUBJECT TO CHANGE WITHOUT PRIOR NOTICE